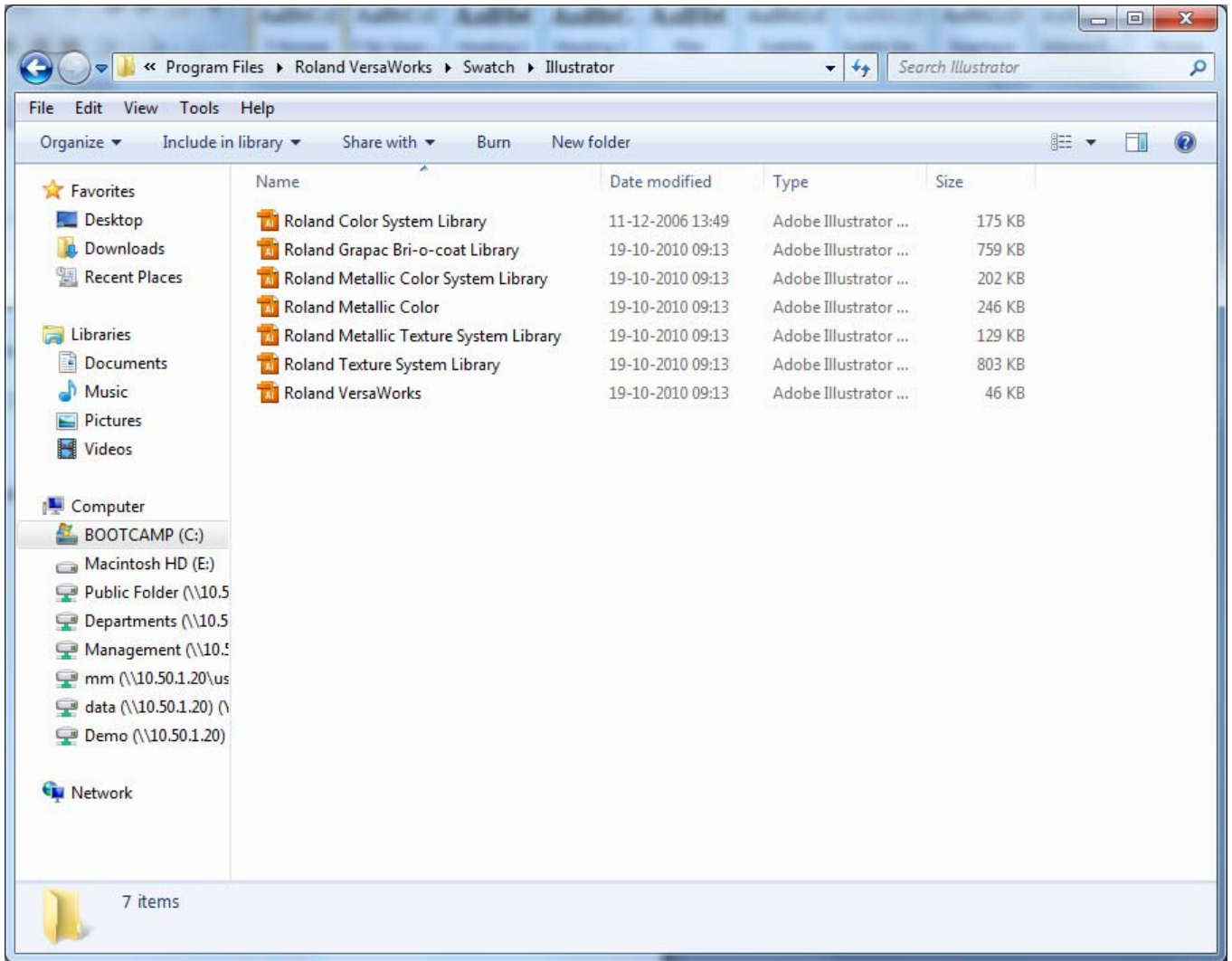


Copy Roland System Color Swatches, Illustrator.

Open the folder on the local machine where Roland VersaWorks are installed.

C:\Program Files\Roland VersaWorks\Swatch\Illustrator.

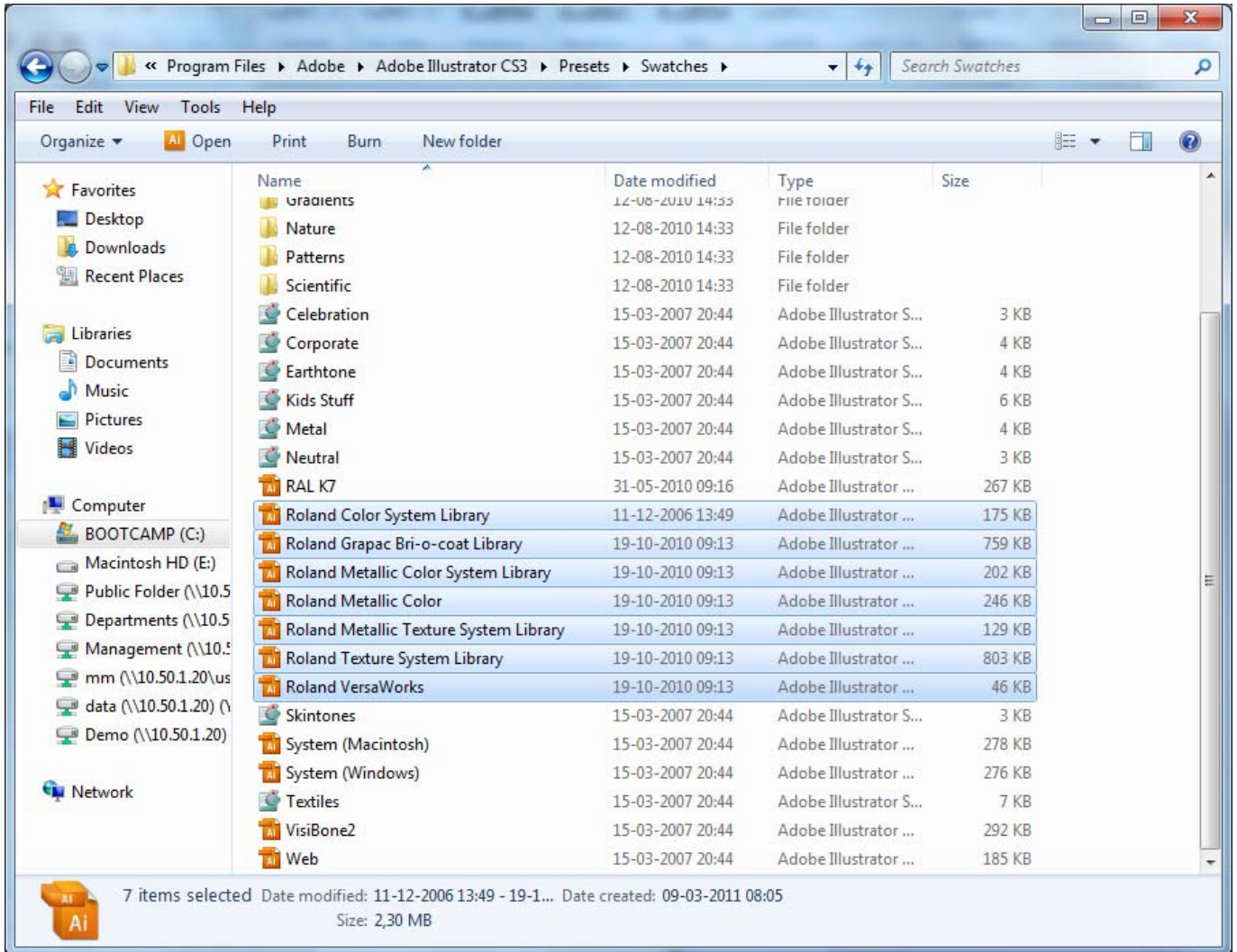


Roland Color System Library	Contains more than 100 predefined spot colors.
Roland Grapac Bri-o-coat Library	Contains predefined gloss layer pattern, made by Grapac Bri-o-coat. Used for the LEC machines
Roland Metallic Color System Library	Same as Color System Library, except that this one contains predefined metallic spot colors
Roland Metallic Color	Contains the 12 most used metallic colors.
Roland Metallic Texture System Library	Roland predefined pattern, can be used with the VS machines.
Roland Texture System Library	Roland predefined pattern.
Roland VersaWorks	Contains the most used SPOT colors, such as White Layer, Gloss Layer, Metallic Silver Layer and CutContour, for cutting lines.

Copy the files you need, to the following destination folder

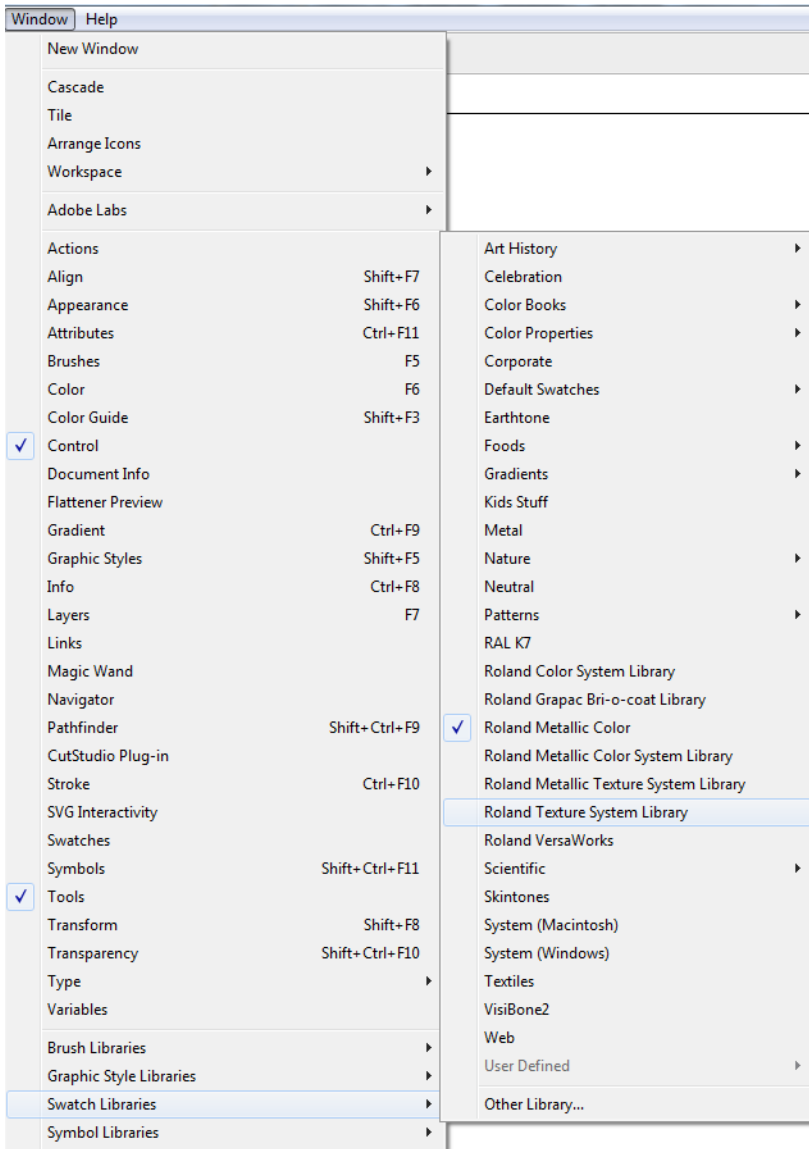
C:\Program Files\Adobe\Adobe Illustrator CS3\Presets\Swatches

Depending on the version of Illustrator, the destination folder can be different.

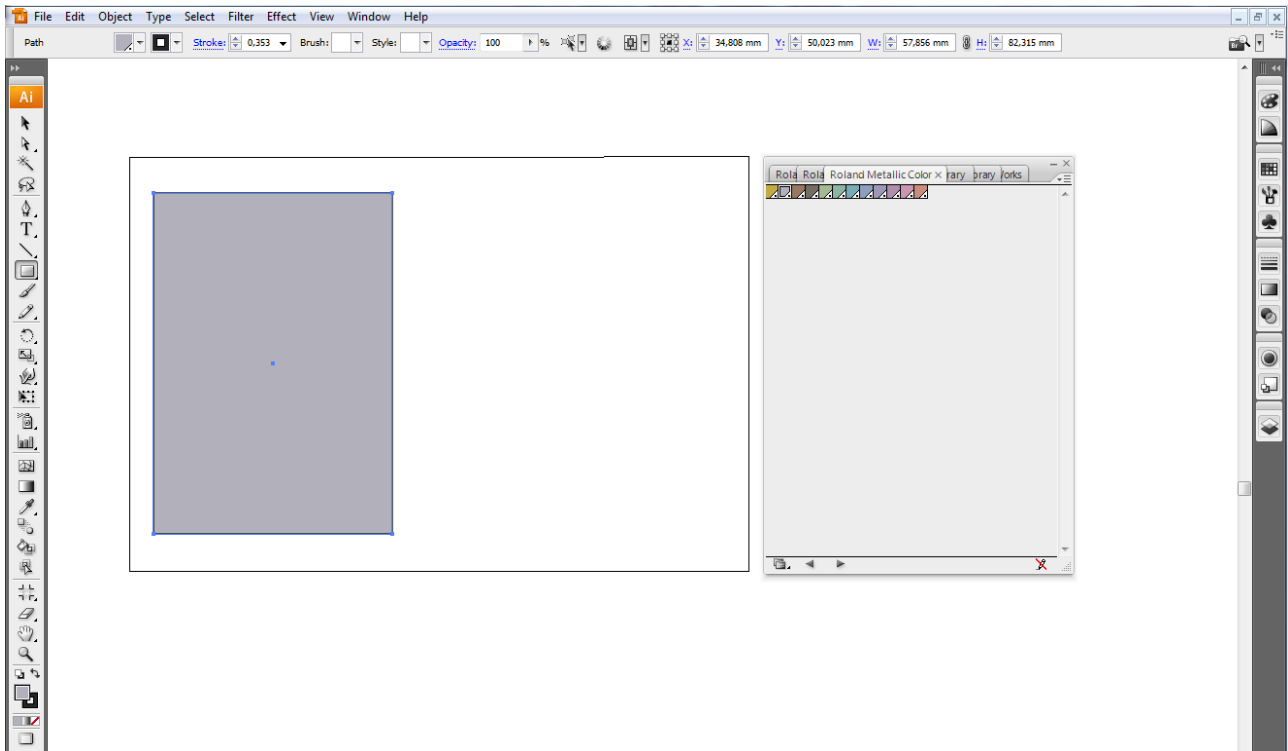


Imagine.

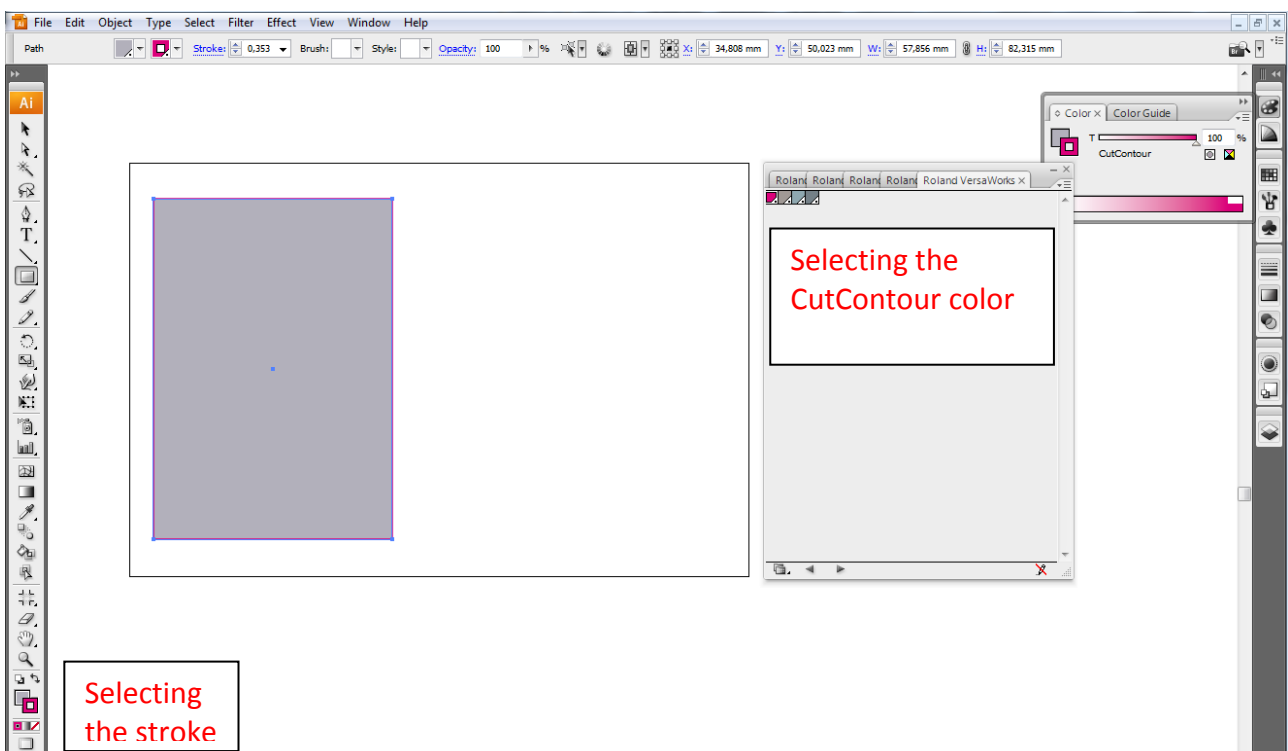
After copying the files to the Swatch library in Illustrator, you can now access the Roland Swatches from the swatch menu in Illustrator.



Open one of the Swatches, depending on type of color of effect.



Just select the color you want, and apply it as you color.

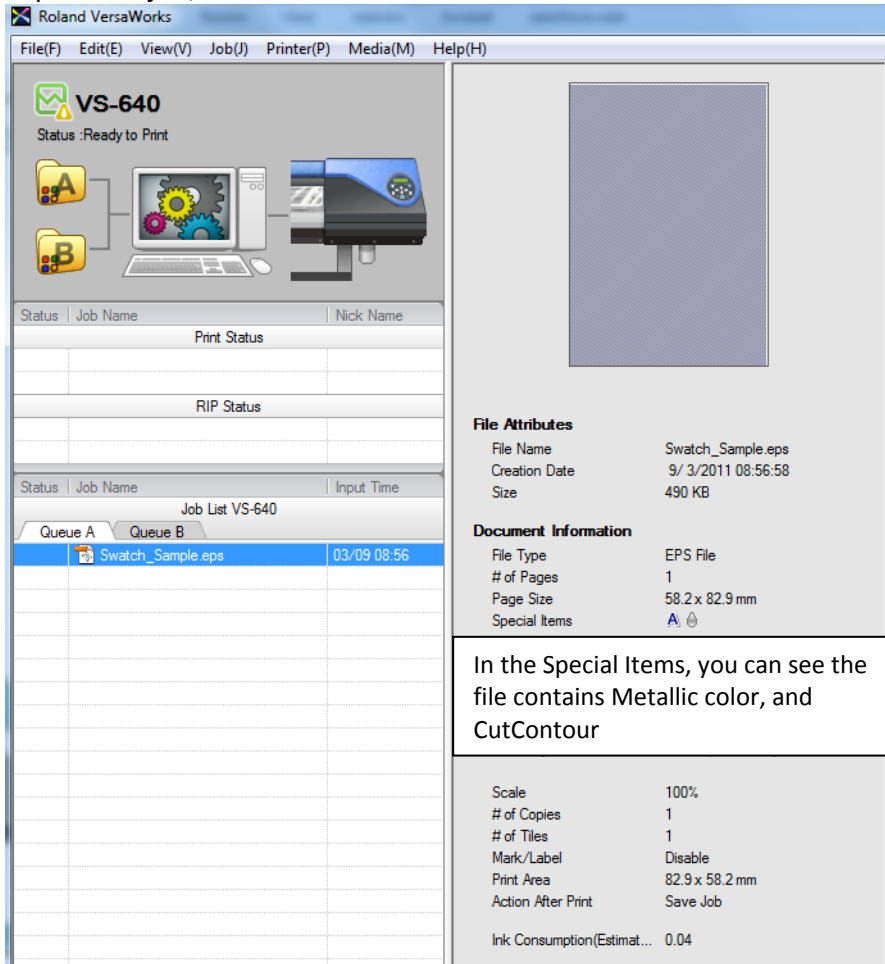


Same procedure is done, if you want to make use of the CutContour. Select your "Stroke", open Roland VersaWorks Swatch, and select the CutContour.

Imagine.

Setting the job options in VersaWorks.

Import the job, into VersaWorks.



The screenshot shows the Roland VersaWorks software interface. The main window displays the job name 'VS-640' with a status of 'Ready to Print'. Below this, there are sections for 'Print Status' and 'RIP Status', both of which are currently empty. A 'Job List VS-640' section shows a queue with one job: 'Swatch_Sample.eps' in Queue A, with an input time of 03/09 08:56. The right-hand side of the interface provides detailed information about the selected job:

File Attributes	
File Name	Swatch_Sample.eps
Creation Date	9/ 3/2011 08:56:58
Size	490 KB

Document Information	
File Type	EPS File
# of Pages	1
Page Size	58.2 x 82.9 mm
Special Items	A, Ⓢ

In the Special Items, you can see the file contains Metallic color, and CutContour

Scale	100%
# of Copies	1
# of Tiles	1
Mark/Label	Disable
Print Area	82.9 x 58.2 mm
Action After Print	Save Job
Ink Consumption(Estimat...	0.04

If the job contains Special Items, this will always be showed under Special Items.

The following items are available.

RIP Status

Status	Job Name	Input Time
Job List VS-640		
Queue A Queue B		
	Swatch_Sample.eps	03/09 08:56
	Swatch_Sample_All.eps	03/09 09:10
Swatch_Sample_All.eps		

File Attributes

File Name	Swatch_Sample_All.eps
Creation Date	9/ 3/2011 09:10:59
Size	615 KB

Document Information

File Type	EPS File
# of Pages	1
Page Size	140.4 x 90.3 mm
Special Items	A [] [] [] []

Job Properties

Media Name	Generic Vinyl 1
Print Quality	Standard
Color Settings	VSEcoMLcLmH_GenPVC1_v5...
Color Adjustment	Linear (Not Edited)
Scale	100%
# of Copies	1
# of Tiles	1
Mark/Label	Disable
Print Area	140.4 x 90.3 mm
Action After Print	Save Job
Ink Consumption(Estimat...	0.04

RIP Status

Status	Job Name	Input Time
Job List VS-640		
Queue A Queue B		
	Swatch_Sample.eps	03/09 08:56
	Swatch_Sample_All.eps	03/09 09:10
Job List LEC-330		
Queue A Queue B		
	Swatch_Sample_All.eps	03/09 09:13

File Attributes

File Name	Swatch_Sample_All.eps
Creation Date	9/ 3/2011 09:13:18
Size	615 KB

Document Information

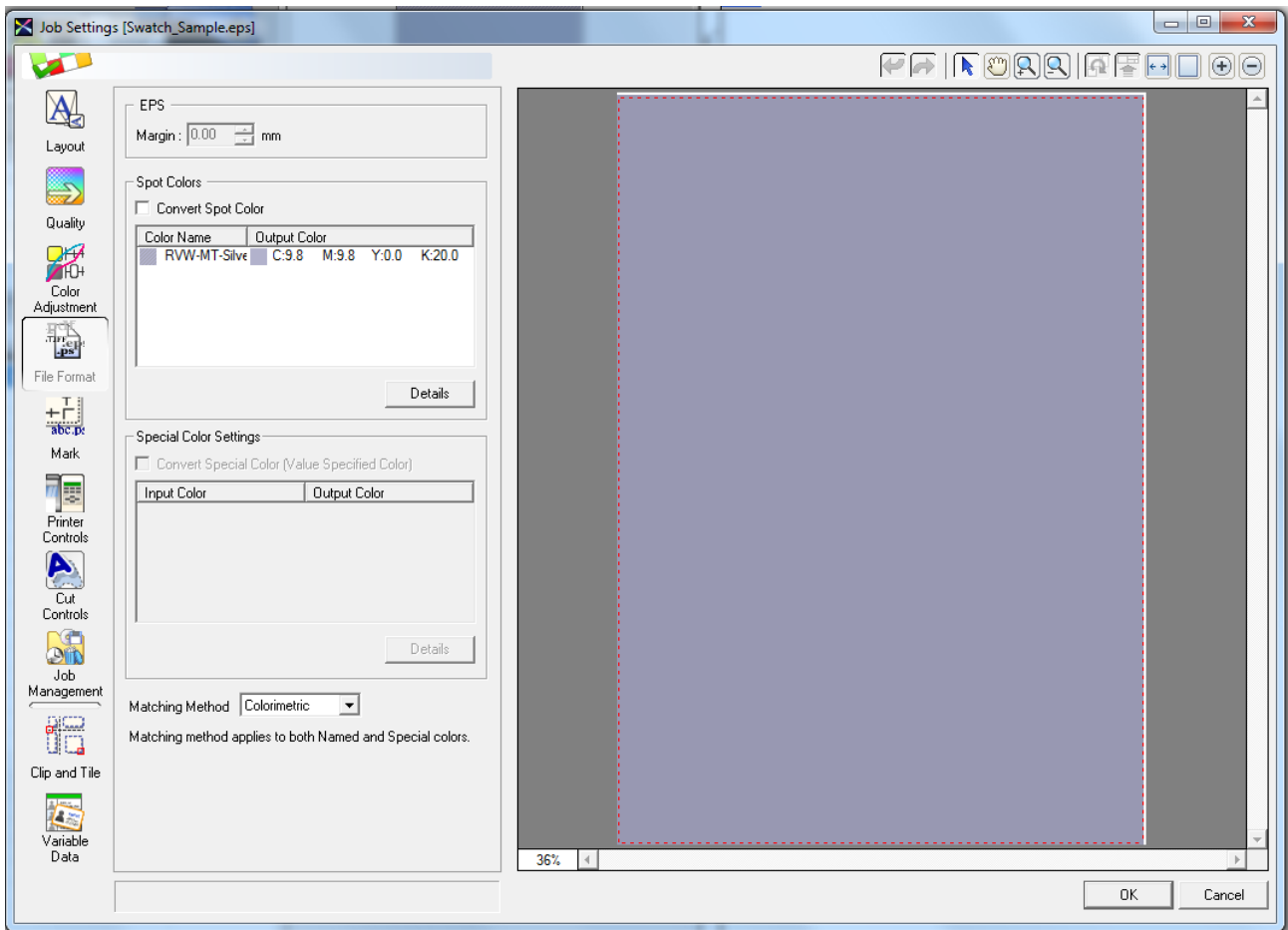
File Type	EPS File
# of Pages	1
Page Size	140.4 x 90.3 mm
Special Items	A [] [] [] []

Job Properties

Media Name	Generic
Print Quality	Standard
Color Settings	LECv2EcoUV_Generic_v72tx7...
Color Adjustment	Linear (Not Edited)
Scale	100%
# of Copies	1
# of Tiles	1
Mark/Label	Disable
Print Area	140.4 x 90.3 mm
Action After Print	Save Job
Ink Consumption(Estimat...	0.02

Depending on the machine, different items are available.

Imagine.



To make VersaWorks print the right SPOT color, it is very important to convert the spot color. Please note that it is very important to check the box “Convert Spot Color”, or else VersaWorks will not convert the spot color.

[See how it is done.](#)

For further information and support

[Contact support.](#)

Imagine.